



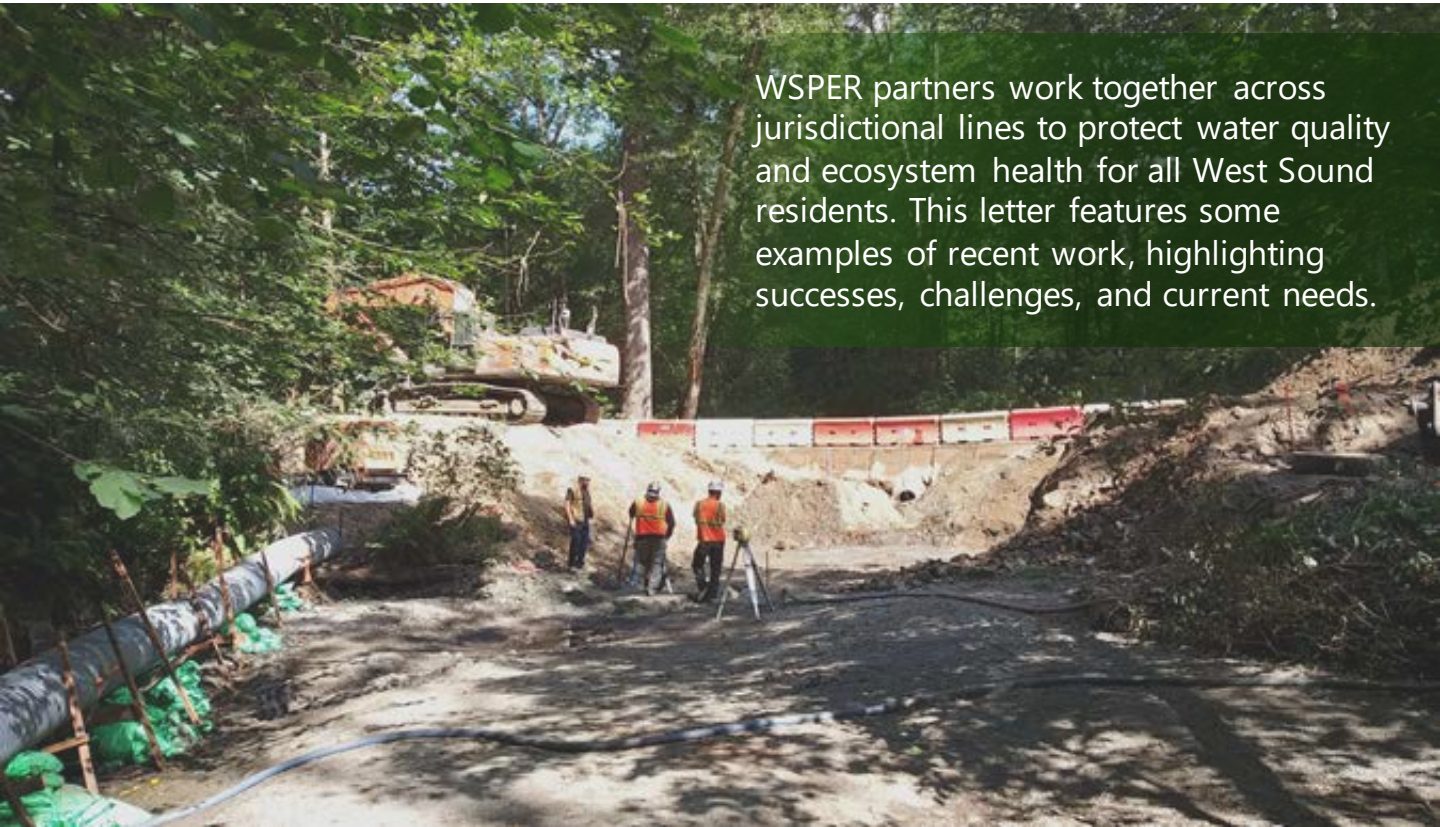
West Sound Partners
for Ecosystem Recovery

WSPER Newsletter

Update to Executive Committee

Summer 2021

WSPER partners work together across jurisdictional lines to protect water quality and ecosystem health for all West Sound residents. This letter features some examples of recent work, highlighting successes, challenges, and current needs.



Featured Programs:

2021 Salmon Recovery Grant Round Project List

Culvert Construction on Huge Creek at 160th Street

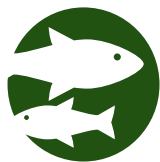
Fletcher Bay Rd NE Culvert and Weir Removal / Stream Restoration

Curley Creek Watershed Prioritization

WSPER Ecosystem Recovery Plan Update

West Sound Local Updates

For more information, please contact Kirvie Mesebeluu-Yobech, WSPER Coordinator
kyobech@co.kitsap.wa.us | (360) 337-7014



Salmon Recovery Grant Round Project List

WSPER coordinates the solicitation and ranking of salmon habitat projects as the lead entity for east Water Resources Inventory Area (WRIA) 15. Approximately \$296,000 of Salmon Recovery Funding Board (SRFB) funds are available for habitat protection or restoration projects aligned with the recovery strategies for salmon and steelhead populations in West Sound. Funding for approved projects will be available after the SRFB meeting in September 2021.

WSPER's Technical Advisory Group (TAG) reviews the projects and recommends a prioritized list to the Working Group for review and final recommendation to the Executive Committee. The table below shows the final list recommended to the Executive Committee.

Updated Normalized Scores	PRSIM #	Project Name	Strategy / Watershed	Project Category	Project Sponsor	Funding Request	Match	Total Project Cost	Total Funding	SRFB Comment (April 1)
0.34	21-1052	Springbrook Creek Preserve Protection and Restoration	Protect intact habitat - Springbrook Creek	Combination-Acquisition and Restoration	Bainbridge Island Land Trust	\$303,648	\$494,564	\$798,212	\$303,648	Cleared
0.15	21-1058	Fletcher Bay Road NE Culvert and Weir Removal/Stream Restoration	Correct fish passage barrier - Springbrook Creek	Planning - Design	Mid Sound Fisheries Enhancement Group	\$85,000	\$50,000	\$135,000	\$85,000	Conditioned
-0.08	21-1053	Point No Point Restoration Reconnection Preliminary Design	West Sound Nearshore Integration/ Synthesis - restore barrier embayment	Planning - Design	Mid Sound Fisheries Enhancement Group	\$76,774	\$203,836	\$280,610	\$61,327	Project of Concern (POC) (\$15,447)
						\$465,422	\$748,400	\$1,213,822	\$449,975	

Total Funds Available	\$449,975
2020 PSAR Return	\$153,700
2020 Unobligated PSAR	\$343
2021 SRFB	\$295,932

SALMON - PSAR

Salmon Recovery and Puget Sound
Acquisition and Restoration



Culvert Removal Construction on Huge Creek at 160th Street

Pierce County is **removing a culvert on Huge Creek at 160th Street to promote fish passage**. The project is progressing quickly. A temporary detour was constructed to the north of the culvert.

- Week of July 12 - Fish removal and diversion of creek
- Week of July 19 - Road fill and culvert removed
- Week of July 26 - Culvert footings installed and streambed sediment added
- Week of August 2 - Culvert lids installed and backfilled

The total project cost is \$735,000 with \$600,000 Puget Sound Acquisition and Restoration Funds and \$135,000 sponsor match.



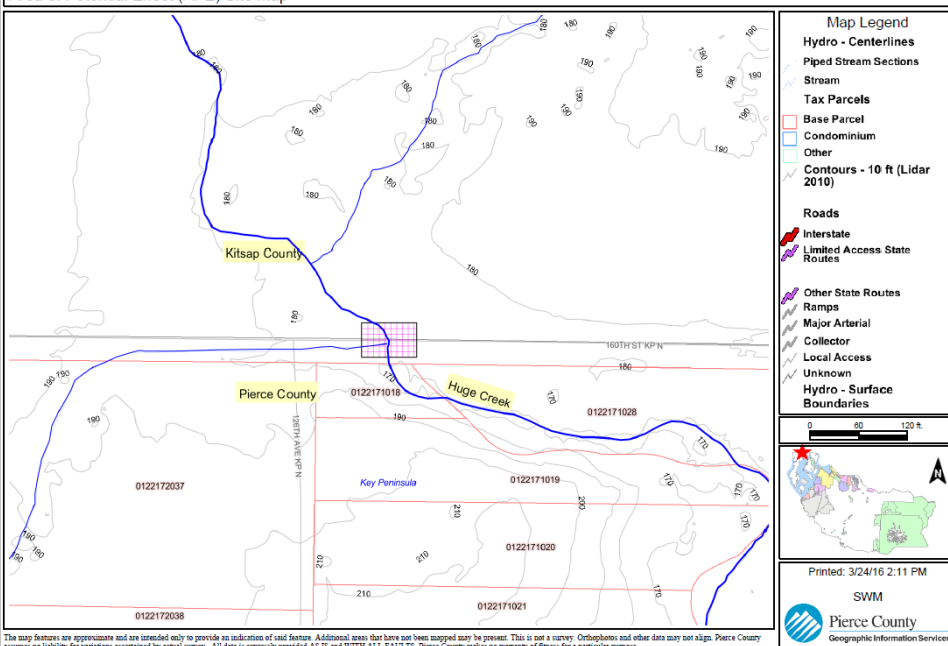
Before culvert removal



Culvert removed

Huge Creek Fish Passage Construction @ 160th St

Area of Potential Effect (APE) Site Map



During de-watering of the stream, **numerous fish were captured and relocated**. They include:

84 Cutthroat	252 Lamprey
10 Coho	188 Crayfish
152 Sculpin	40 Sunfish





Fletcher Bay Rd NE Culvert and Weir Removal / Stream Restoration

After connecting at the West Sound Science Symposium, **the City of Bainbridge Island and Mid Sound Fisheries Enhancement Group (MSFEG) entered into a partnership to restore a culvert and weir on Fletcher Bay Rd NE.** The City budgeted capital funds for the project and MSFEG applied for the grant to implement it. The City budgeted capital funds for the project and MSFEG applied for a Salmon Recovery Funding Board grant to complete project design. The Bainbridge Island Land Trust was also active in generating the idea of and support for the project.



Left: Springbrook Weir failure



Right: Temporary fix



Example of a structure matching the conceptual design for the project.

Program Successes:

- ♦ Innovative partnership between the City of Bainbridge Island and MSFEG facilitates a collaborative approach to addressing both the road infrastructure and in-stream habitat restoration elements of the project.



CITY OF
BAINBRIDGE ISLAND





Curley Creek Watershed Prioritization

Over the past four months, **Mid Sound Fisheries Enhancement Group facilitated a collaborative of salmon recovery practitioners to rank actions identified in the Curley Creek Watershed Assessment and Restoration Plan.** Mid Sound, the Suquamish Tribe, Great Peninsula Conservancy, Washington Department of Fish and Wildlife, Kitsap Conservation District, Kitsap Noxious Weed Control Board, Wild Fish Conservancy, Kitsap County, Pierce County and City of Port Orchard worked together to **compare the expected benefit and feasibility of recommended actions throughout the watershed.**

These three actions were identified as top priorities:

Long Lake Shoreline:

Predation in Long Lake has previously been identified as an impediment to coho production in the watershed, and water quality issues have been affecting the lake for decades. This action would address predation of native salmon in Long Lake, restore riparian shoreline vegetation, and work with lake front landowners to reduce nutrient and pesticide inputs. Mid Sound will begin conversations with partners to create a road map to address these conditions.

Water Typing and Enforcement:

Wild Fish Conservancy has been surveying streams throughout the watershed through 2020 and 2021 and will use this information to update DNR Water Typing maps. Based on nearby surveys, these maps can underestimate the extent of fish bearing streams by 20%. This project will give an accurate picture of on ground habitat conditions and ensure fish bearing streams are adequately protected.

Salmonberry Creek Culverts:

This action would improve fish passage on the two lowest culverts on Salmonberry Creek which present a partial barrier to fish and disrupt watershed processes. Repairing them would improve access to 10 miles of stream, including cool water refuges on the aptly named Cool Creek.



Long Lake Park

Map of priority action area streams

Many other highly ranked projects are already underway. WSDOT plans to address the third fish passage barrier on Salmonberry creek in the coming years; Great Peninsula Conservancy continues to protect high quality habitats throughout the watershed; and Kitsap Conservation District is helping a private landowner address a fish passage barrier on a key tributary to Curley Creek. This ranking highlights opportunities for high impact projects, and priority reaches where partners are already kicking goals.





WSPER Ecosystem Recovery Plan Update

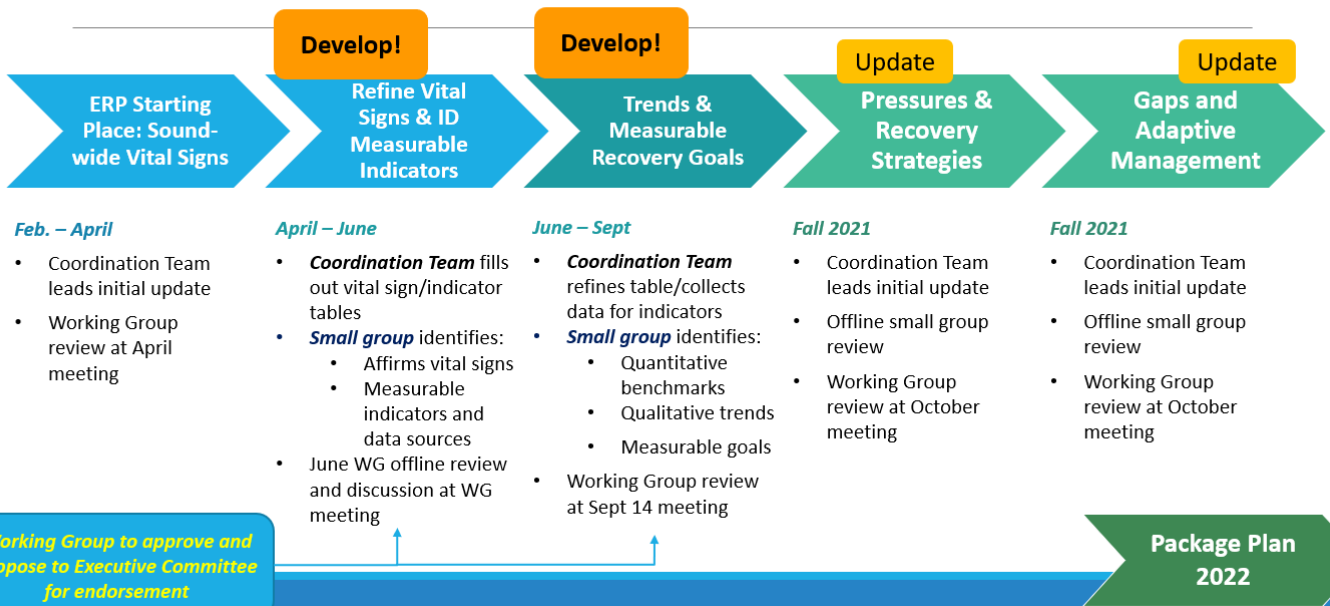
The WSPER Working Group is working collaboratively to update the Ecosystem Recovery Plan (ERP), which guides the Local Integrating Organization (LIO) and Lead Entity (LE) in focused work to restore salmon and ecosystems in West Sound. Drawing on the structure of the Puget Sound Partnership's Action Agenda, WSPER identified four goal areas and a list of Vital Signs and Measurable Indicators applicable to West Sound, and is working to identify data sources to support tracking the Indicators.

WSPER's ERP will focus on four goal areas:



Graphic sourced from the Puget Sound Partnership, modified to show WSPER's ERP goals.

ERP Update: Proposed Timeline





West Sound Local Updates

➤ 2022-2026 Puget Sound Action Agenda Update

In developing the 2022-2026 Action Agenda, the Puget Sound Partnership asked LIOs to provide local feedback on draft Puget Sound regional strategies to communicate challenges and opportunities in LIO area. There are 151 draft Puget Sound regional strategies. WSPER members and the Coordinator reviewed the draft strategies in late June 2021.

2022-2026 ACTION AGENDA UPDATE TIMELINE



Phases of work for the 2022-2026 Action Agenda development

➤ Stormwater Parks

Stormwater parks are an important strategy for improving the health of Puget Sound and its residents. Through funding from the Puget Sound National Estuary Program, **Puget Sound Regional Council is offering consultant assistance for early planning of four new stormwater parks** (one in each central Puget Sound county).

Information on the opportunity, eligibility, selection criteria, and how to apply is provided here:

<https://www.psrc.org/sites/default/files/stormwaterparks-opportunity.pdf>. **The deadline is September 15, 2021.**



Manchester Stormwater Park in Kitsap County. Image Source: PSRC

➤ Bainbridge Island Coastal Cleanup



Sustainable Bainbridge will be hosting a beach cleanup on September 19, 2021, 9:00 a.m.- 12:00p.m. Families and groups are encouraged to attend. Participants can submit entries of interesting finds and upcycling art projects with found items; Sustainable Bainbridge will adopt one of the 74 remaining Southern Resident Orca Whales in the name of the winner(s).

More information can be found here:

<https://www.sustainablebainbridge.org/event/beach-cleanup/>.