



WSPER partners work together to protect water quality and shoreline ecosystem health for all West Sound residents. This update features some examples of recent work, highlighting successes, challenges, and current needs.



### **Featured programs:**

Pierce County Conservation Futures

West Sound Stormwater Outreach Group

Pierce & Kitsap County Fish Passage Projects

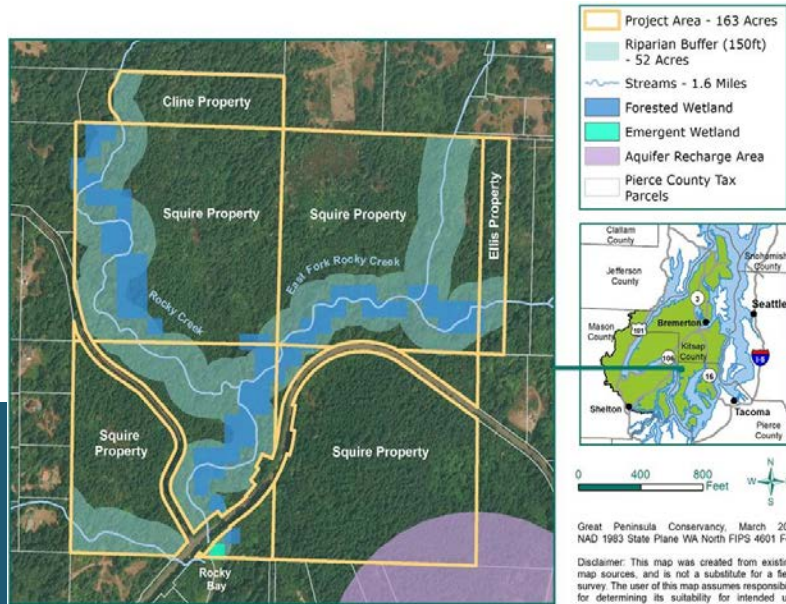
Shore Friendly Pierce & Kitsap



# Pierce County Conservation Futures Program

Conservation Futures is a **land preservation program** funded by property tax that provides **grant funding for acquisition of important open spaces** within Pierce County, including wetlands, wildlife habitat, recreation areas, timber lands, and agricultural lands. Pierce County established the program in 1991 and the first project acquisitions were completed in 1993. **Program staff work with a strong network of partners** to leverage resources for the protection of important community spaces and working lands, including Pierce County departments, local cities and towns, parks districts, and non-profits.

Funding applications are accepted in odd-numbered years and acquisition of selected projects occurs over the following two-year period. The program typically allocates \$3.5 – \$5 million each biennium depending on property values and the current tax rate.



Conservation Futures is a land preservation program that:



Serves all Pierce County residents



Conserves great spaces



Effectively leverages resources



Provides multiple community benefits

## Program Successes:

- ♦ Allocated over \$81 million since 1991
- ♦ Completed 128 projects resulting in the preservation of 6,194 acres of open space, most of which is publicly accessible.
- ♦ Since 2019, Great Peninsula Conservancy (GPC) has leveraged over \$600,000 Pierce Conservation Futures Program funds to match WSPER salmon recovery funds for a combined amount of almost \$1.5 million, funding 3 projects totaling ~300 acres. The three projects include a farmland easement as well as prime salmon habitat property purchase and conservation easement acquisition. Two of the projects were matched with WSPER funding of ~\$500,000, more than doubling the SRFB contribution.

## Program Challenges:

- ♦ More eligible applications are received than can be funded.

*This program would benefit from:*

- ♦ Reconsideration of the property tax levy lid
- ♦ Improved public outreach and communications
- ♦ Formalization of a regular compliance monitoring program





# West Sound Stormwater Outreach Group

Since 2008, Kitsap County has worked with West Sound cities to **jointly develop, implement, and fund NPDES Municipal Stormwater Permit-required outreach via interlocal agreements.** With the additions of Bainbridge Island and Port Angeles in 2012, the group assumed the name of West Sound Stormwater Outreach Group (WSSOG), to represent the regional scope and to align with other similar groups across Puget Sound under the Stormwater Outreach for Regional Municipalities (STORM) umbrella.

## Participating Members:

Kitsap County | City of Poulsbo | City of Bremerton | City of Port Orchard | City of Gig Harbor  
City of Bainbridge Island | City of Port Angeles

These agencies work cooperatively to help meet the requirements for compliance with NPDES Phase II Municipal Stormwater Permit Section S5.C.1, Public Education and Outreach, through the implementation of "education and outreach program[s] designed to:

- **Build general awareness about methods to address and reduce impacts** from stormwater runoff;
- **Effect behavior change** to reduce or eliminate behaviors and practices that cause or contribute to adverse stormwater impacts;  
and, when possible,
- **Create stewardship opportunities** that encourage community engagement in addressing the impacts from stormwater runoff.



## Program Successes:

- Implementation of Mutt Mitt program to reduce pet waste
- Outreach on spill detection and reporting
- Participation in regional Puget Sound Starts Here program
- Natural lawn care behavior change pilot program





# Pierce | Kitsap County Fish Passage Projects

Pierce County and Kitsap County **share several important salmon-producing watersheds** including Purdy Creek, Minter Creek, Huge Creek and Rocky Creek. The headwaters of these streams originate in Kitsap County and flow south through Pierce County and into Carr Inlet. The shared 160th roadway runs along 3.6 miles of the county line that bisects the shared basins and is maintained by Kitsap County through an agreement with Pierce County.

Pierce and Kitsap Counties have worked together on water quality issues in the shared watersheds for a long time. Three fish passage barriers have been identified on Purdy Creek and one on Huge Creek crossing 160th. **Pierce County is addressing the two most severe long-standing barriers**, one in each stream.

## Program Successes:

- ◆ Huge Creek construction at 160<sup>th</sup> and Purdy Creek Feasibility at 160<sup>th</sup> were awarded Salmon Recovery Funding Board grants through the Washington Recreation and Conservation Office.

*See below for details about these projects.*

## Program Challenges:

- ◆ Two smaller fish passage barriers crossing 160<sup>th</sup> in the Purdy Creek basin still need to be addressed.
- ◆ Pierce and Kitsap rely in part on WA State Department of Transportation barrier corrections in order to apply for WA Fish Barrier Removal Board Grant Program funds. WSDOT is seeking legislative funding for completion of several removal projects on Purdy Creek.



**Purdy Creek at 160<sup>th</sup>**



**Huge Creek at 160<sup>th</sup>**

Current structure	A 4' round precast concrete culvert, retrofitted with a homemade 2-step fishway over 3 decades ago	A 5'x 6' concrete box culvert installed around 1950
Current Percent Passable	33%	33%
Benefitting Species	Coho and chum salmon; steelhead and coastal cutthroat trout	Chinook, Coho, chum, and pink salmon; steelhead and coastal cutthroat trout
Design Status	30% level of design	Redesigned by Pierce County SWM. Funded by a SRFB construction grant, Pierce County and Kitsap grant match
Scheduled Construction	2022-23	2021



# Shore Friendly Pierce & Kitsap Programs

Shore Friendly is a regional effort to **empower Puget Sound waterfront landowners to create beautiful, environmentally friendly shorelines** for themselves and generations to come. The program is partially funded by the Estuary Salmon and Restoration Program (ESRP). In the West Sound, **Pierce and Kitsap Counties have developed robust Shore Friendly programs** that connect landowners with the resources and technical support they need to complete shoreline restoration projects.

## Shore Friendly Pierce

Mary Krauszer, [maryk@pierccd.org](mailto:maryk@pierccd.org) | (253) 845-9770 x113

### Program Successes:

- ♦ Served 62 shoreline landowners with site visits, management recommendations, and/or technical assistance and resources, impacting 1,61 linear ft of natural shoreline and 544 linear feet of armored shoreline.
- ♦ Launched a mini-grant program to support shoreline stewardship.
- ♦ Launched the new [Shore Friendly Pierce webpage](#) including a customized [guidance document library](#).
- ♦ Hosted our first workshop (pre-COVID-19) for Pierce shoreline landowners with 32 attendees.
- ♦ Pivoted outreach efforts online and released the "Top Five Recommendations for Your Shoreline" video series, which generated over 700 views. The series was featured by the [National Association of Conservation Districts](#).

### Program Challenges:

- ♦ Funding gap for outreach activities after 2021



## Shore Friendly Kitsap

Christina Kereki, [shorefriendly@co.kitsap.wa.us](mailto:shorefriendly@co.kitsap.wa.us) | (360) 307-4242

### Program Successes:

- ♦ Assisted and completed 16 bulkhead removal or soft shore projects on local properties, totaling 1,150 ft of shoreline.
- ♦ Completed 24 outdoor site visits to property owners in 2020.
- ♦ Strengthened virtual outreach in 2020, including social media presence, virtual newsletters and a popular shoreline webinar series attended by 120 waterfront landowners.
- ♦ Co-hosted an Orca Recovery Day event at which volunteers installed a native plant garden and removed a large section of scotch broom from the estuary edge.
- ♦ Established partnership with Mid Sound Fisheries Enhancement Group to support nearshore restoration projects.

### Program Challenges:

- ♦ Project development challenges due to COVID-19
- ♦ Funding gap of \$21,000 for outreach activities

